

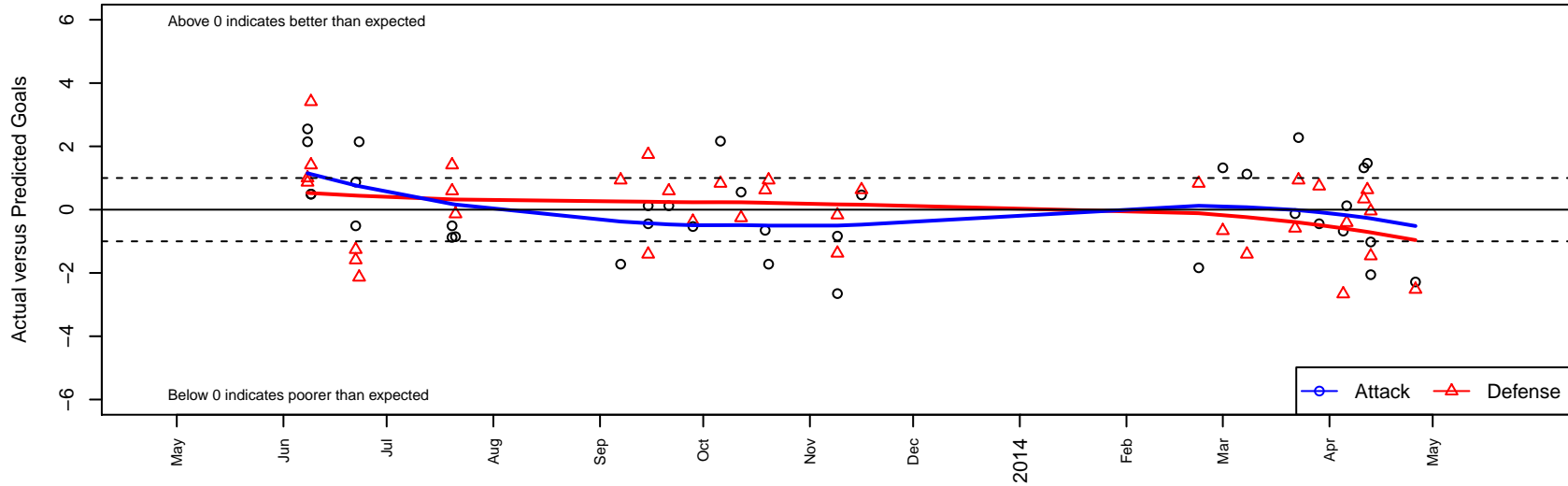
ASE Emerald G01

Academy of Soccer Excellence
 Pasco, WA
 G01 total strength=856
 attack=1.69 defense=0.87
 fall league = PSPL WSPL U12, Spr PSPL Super League U12
 notes= Thunder
 alt names used:
 ASE Emerald G01
 ASE G01 Emerald

Venues played:
 Rainier Challenge Samba U12
 US Club Regionals Super U11
 Nike Crossfire Challenge Gold U12
 PSPL WSPL U12
 Spr PSPL Super League U12
 WA Cup GU12 Gold/Silver U12



ASE Emerald G01
 Dots are actual minus expected GF (blue circles) and GA (red triangles).
 Blue line is smoothed change in attack strength. Red is smoothed change in defense strength.



	date	home		away		venue	pred.home	pred.away
7798	2014-04-26	ISC Gunners A G02	3	ASE Emerald G01	1	WA Cup GU12 Gold/Silver U12	0.48	3.29
7727	2014-04-13	ASE Emerald G01	2	CWSA Navy G01	1	WA Cup GU12 Gold/Silver U12	4.05	0.96
7729	2014-04-13	ASE Emerald G01	2	Wenatchee Fire Black G01	2	WA Cup GU12 Gold/Silver U12	3.02	0.54
7701	2014-04-12	Spokane Foxes Platinum G01	1	ASE Emerald G01	3	WA Cup GU12 Gold/Silver U12	1.63	1.53
7655	2014-04-11	CDA Sting White Caps G01	1	ASE Emerald G01	4	WA Cup GU12 Gold/Silver U12	1.34	2.68
7633	2014-04-06	Spokane Foxes Red G01	2	ASE Emerald G01	1	Spr PSPL Super League U12	1.59	0.88
7600	2014-04-05	CDA Sting White Caps G01	4	ASE Emerald G01	2	Spr PSPL Super League U12	1.34	2.68
7533	2014-03-29	XiFA G2020 G01	1	ASE Emerald G01	2	Spr PSPL Super League U12	1.74	2.45
7498	2014-03-23	ASE Emerald G01	4	ISC Gunners A G01	0	Spr PSPL Super League U12	1.72	0.93
7482	2014-03-22	ASE Emerald G01	3	Marysville Force G01	2	Spr PSPL Super League U12	3.13	1.41
7318	2014-03-08	ASE Emerald G01	2	Spokane Foxes Red G01	3	Spr PSPL Super League U12	0.88	1.59
7207	2014-03-01	ASE Emerald G01	4	CDA Sting White Caps G01	2	Spr PSPL Super League U12	2.68	1.34
7124	2014-02-22	MVP Marauders Navy G01	0	ASE Emerald G01	0	Spr PSPL Super League U12	0.83	1.84
6599	2013-11-16	Spokane Foxes Platinum G01	1	ASE Emerald G01	2	PSPL WSPL U12	1.63	1.53
6496	2013-11-09	MVP Marauders Navy G01	1	ASE Emerald G01	1	PSPL WSPL U12	0.83	1.84
6498	2013-11-09	PS Slammers Black G01	2	ASE Emerald G01	0	PSPL WSPL U12	0.62	2.65
6138	2013-10-20	ISC Gunners A G01	0	ASE Emerald G01	0	PSPL WSPL U12	0.93	1.72
6059	2013-10-19	PS Slammers Black G01	0	ASE Emerald G01	2	PSPL WSPL U12	0.62	2.65
5903	2013-10-12	ASE Emerald G01	3	XiFA G2020 G01	2	PSPL WSPL U12	2.45	1.74
5803	2013-10-06	ASE Emerald G01	4	MVP Marauders Navy G01	0	PSPL WSPL U12	1.84	0.83
5549	2013-09-28	ASE Emerald G01	1	Spokane Foxes Platinum G01	2	PSPL WSPL U12	1.53	1.63
5406	2013-09-21	ASE Emerald G01	1	Spokane Foxes Red G01	1	PSPL WSPL U12	0.88	1.59
5307	2013-09-15	Spokane Foxes Red G01	3	ASE Emerald G01	1	PSPL WSPL U12	1.59	0.88
5309	2013-09-15	XiFA G2020 G01	0	ASE Emerald G01	2	PSPL WSPL U12	1.74	2.45
5097	2013-09-07	ASE Emerald G01	0	ISC Gunners A G01	0	PSPL WSPL U12	1.72	0.93
4310	2013-07-21	PacNW Maroon G01	3	ASE Emerald G01	0	Nike Crossfire Challenge Gold U12	2.87	0.85
4250	2013-07-20	ASE Emerald G01	0	Spokane Foxes Red G01	1	Nike Crossfire Challenge Gold U12	0.88	1.59
4252	2013-07-20	Crossfire Premier A G01	3	ASE Emerald G01	0	Nike Crossfire Challenge Gold U12	4.41	0.51

	date	home		away		venue	pred.home	pred.away
4002	2013-06-23	ASE Emerald G01	3	PacNW Maroon G01	5	US Club Regionals Super U11	0.85	2.87
3984	2013-06-22	FC Portland Navy G01	4	ASE Emerald G01	2	US Club Regionals Super U11	2.74	1.13
3986	2013-06-22	ASE Emerald G01	0	Crossfire Premier A G01	6	US Club Regionals Super U11	0.51	4.41
3868	2013-06-09	Crossfire Premier A G01	1	ASE Emerald G01	1	Rainier Challenge Samba U12	4.41	0.51
3870	2013-06-09	ASE Emerald G01	1	Crossfire Premier A G01	3	Rainier Challenge Samba U12	0.51	4.41
3843	2013-06-08	ASE Emerald G01	3	PacNW Maroon G01	2	Rainier Challenge Samba U12	0.85	2.87
3844	2013-06-08	ASE Emerald G01	4	RV Slammers Orange G01	0	Rainier Challenge Samba U12	1.45	1.00